



Priory Walk, Portbury, BS20 7TJ

Guide Price £425,000

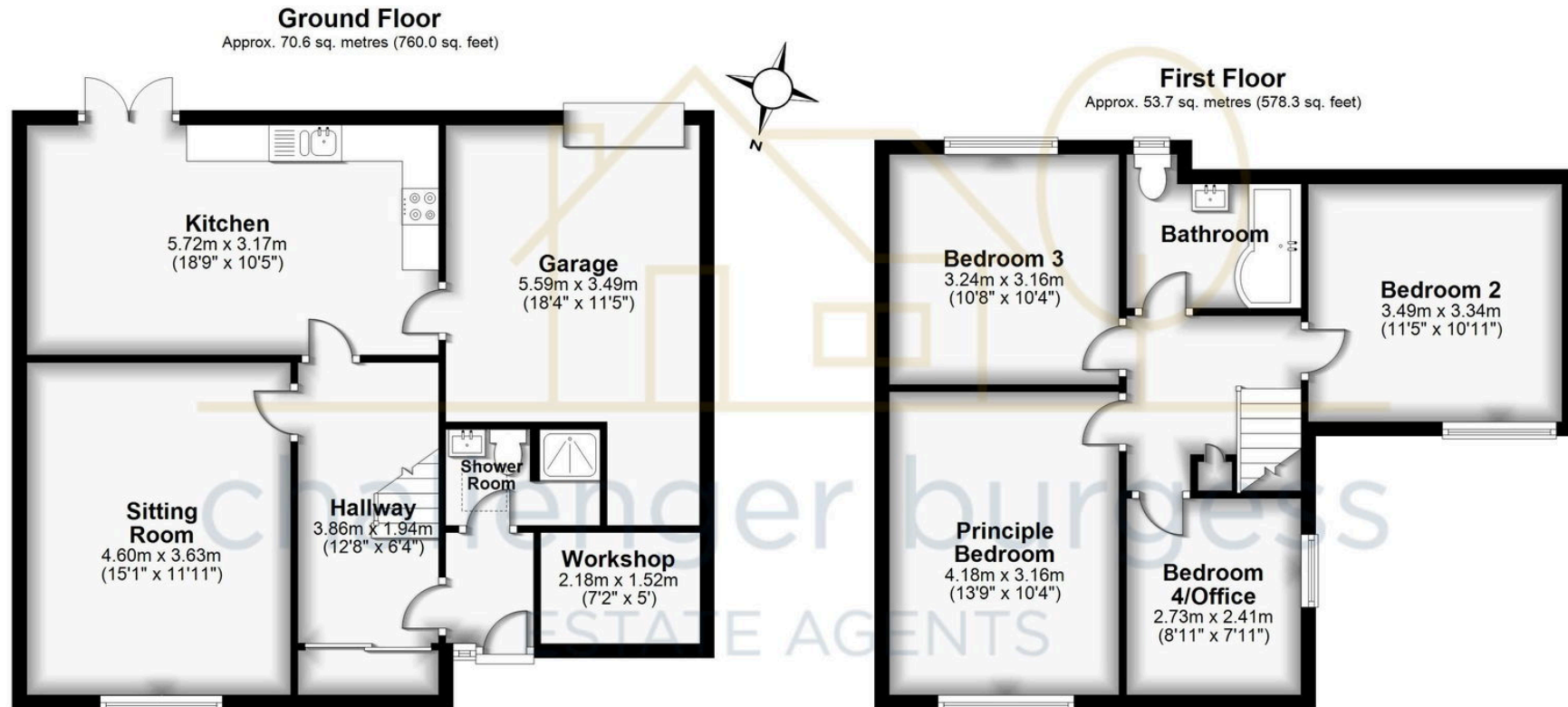
Priory Walk, Portbury, BS20 7TJ

Welcome to this impeccably presented, four bedroom, chalet-style house, located in a quiet village setting. This property offers a comfortable and practical living space, has been modernized throughout and comes with a garage and parking. Situated in the popular village of Portbury which is set on the outskirts of Portishead and a short drive to Clifton, Bristol. Close at hand you have the sought after Priory Public House, the local village hall, M5 motorway, "Bluebell Wood" which is an area of beauty to walk and relax. This property falls in the catchment of St Marys Primary School.









Total area: approx. 124.3 sq. metres (1338.3 sq. feet)